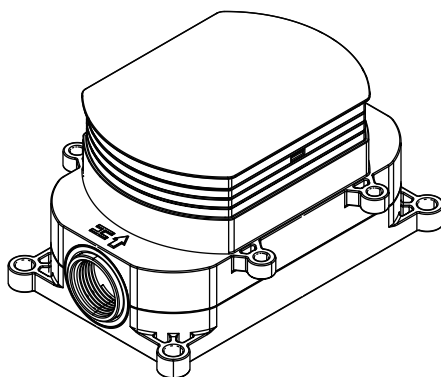


mob

INSTALLATION INSTRUCTIONS

Floor-standing bathtub/faucet embedded box



Before Installation

Check whether the product in the package is consistent with the installation instructions

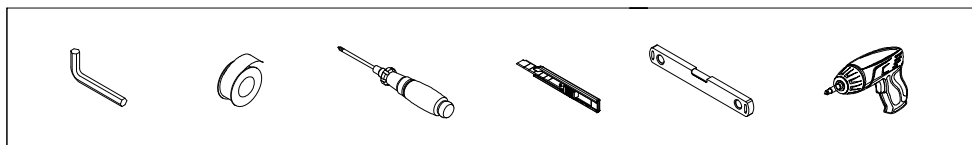
Make sure the product is suitable for the use environment (pressure : 0.03 MPa - 1 MPa, temperature: 5°C - 9 0°C)

Check whether the product and spare parts are damaged

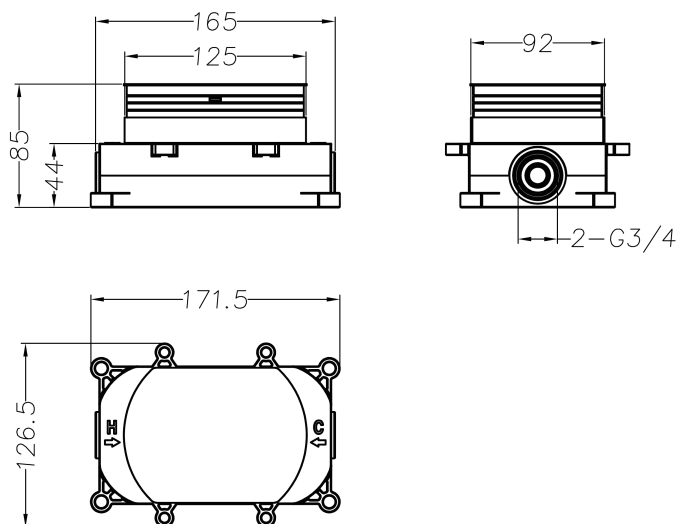
Turn off the waterway switch before installation

Prepare the tools you may need

Recommend Tools

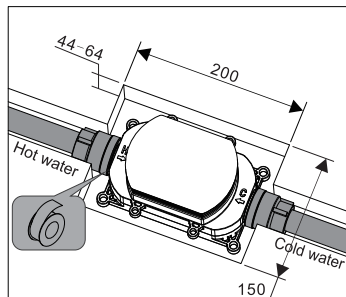


Dimensions

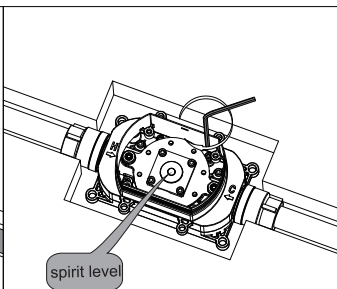


Unit:mm

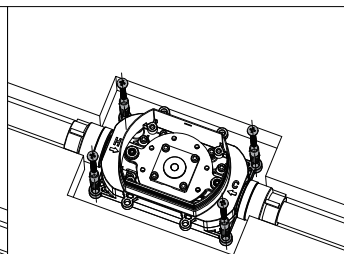
Installation Procedure



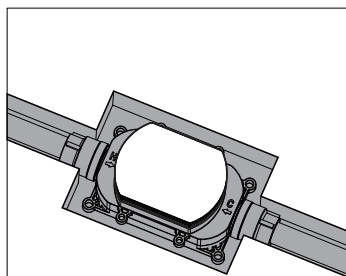
1. Connect the pipe to the water port, left (H) for hot water and right(C) for cold water.



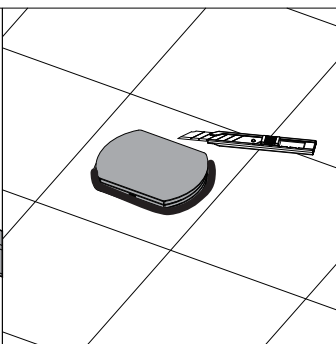
2. Adjust the 4 screws on valve, make sure it's at horizontal position.



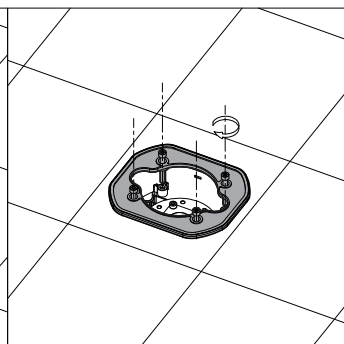
3. Use the screw driver to fix the valve to the floor by the screws provided.



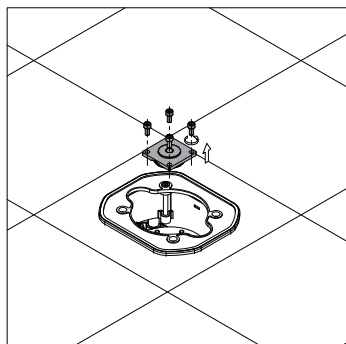
4. Fixing the box by cement and get the tiles cutted according to the cover dimension.



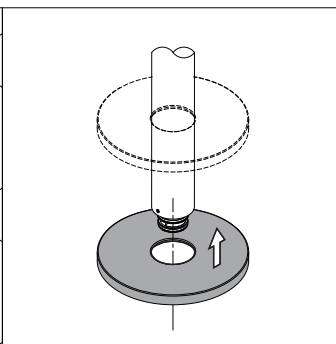
5. Cut the extra plaster shield, seal the gap with waterproof sealant.



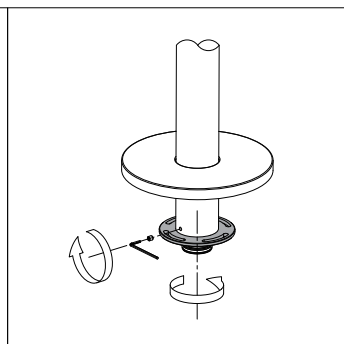
6. Fixing the waterproof board .



7. Take out the plugs and spirit level.

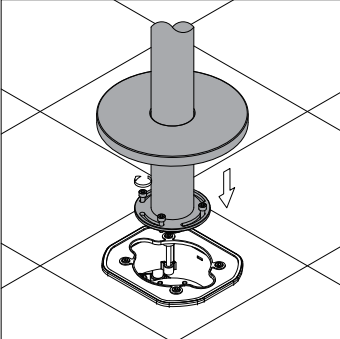
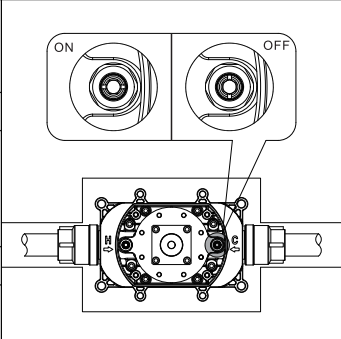
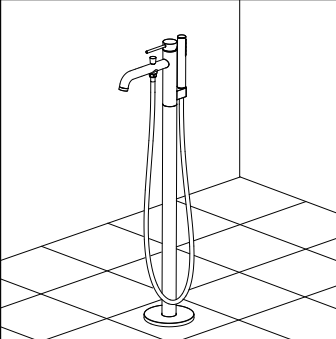


8. Sleeve the flange to mixer body, from bottom to top.



9. Clockwise sleeve the fixing part to the bottom of mixer body, and then fixed screw at side.

Installation Procedure

		
<p>10. Put the faucet inside the built in box, adjust direction, then move down the flange to floor.</p>	<p>11. Open the built in service to on position, horizon is open while verticle is close.</p>	<p>12. Connect the shower hose and hand shower accordingly.</p>

Before Use

In order to ensure the faucet functional stability and long-lasting appearance, please follow the following precautions:

The main body of the faucet is made of high-quality brass. Brass is soft, so do not hit it with hard objects;

Each component of this product has been professionally assembled and tested before leaving the factory. Non-professionals should not disassemble it to avoid affecting the product warranty;

Do not use this product at overpressure or temperature to avoid excessive harm to your body and irreversible damage to the product;

In order to maintain a better appearance, rinse the surface stains with clean water after each use;

Do not use metal or other hard cleaning tools to clean the product surface to avoid scratching the product;

Do not use acidic or other highly corrosive cleaners to clean the product surface to avoid damaging the product surface coating;

When a product malfunctions, contact the dealer promptly to send a professional to perform maintenance.