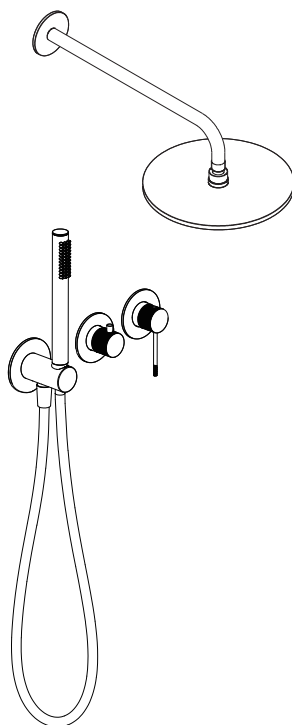


mob

INSTALLATION INSTRUCTIONS

Concealed Bathtub Faucet



Before Installation _____

Check whether the product in the package is consistent with the installation instructions

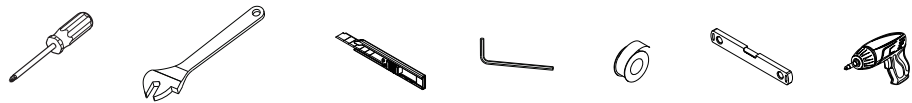
Make sure the product is suitable for the use environment (pressure : 0.03 MPa - 1 MPa, temperature: 5°C - 9 0°C)

Check whether the product and spare parts are damaged

Turn off the waterway switch before installation

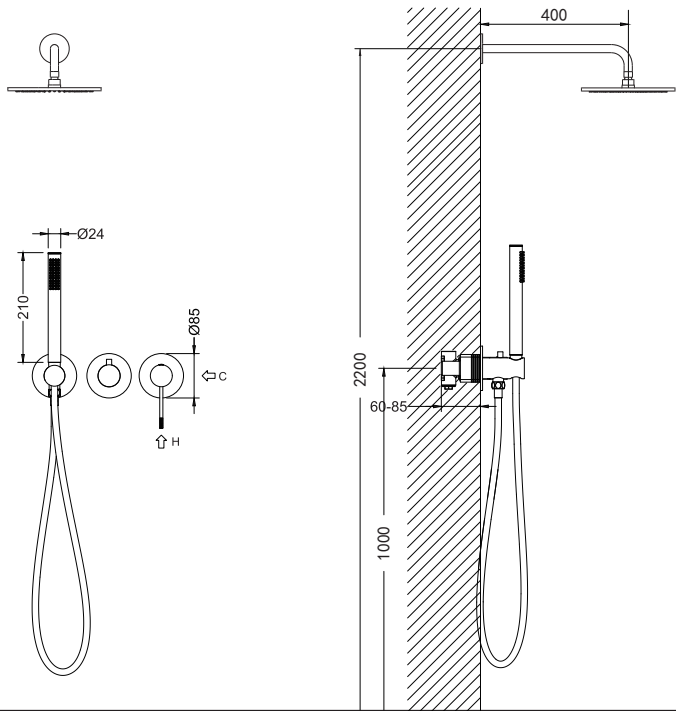
Prepare the tools you may need

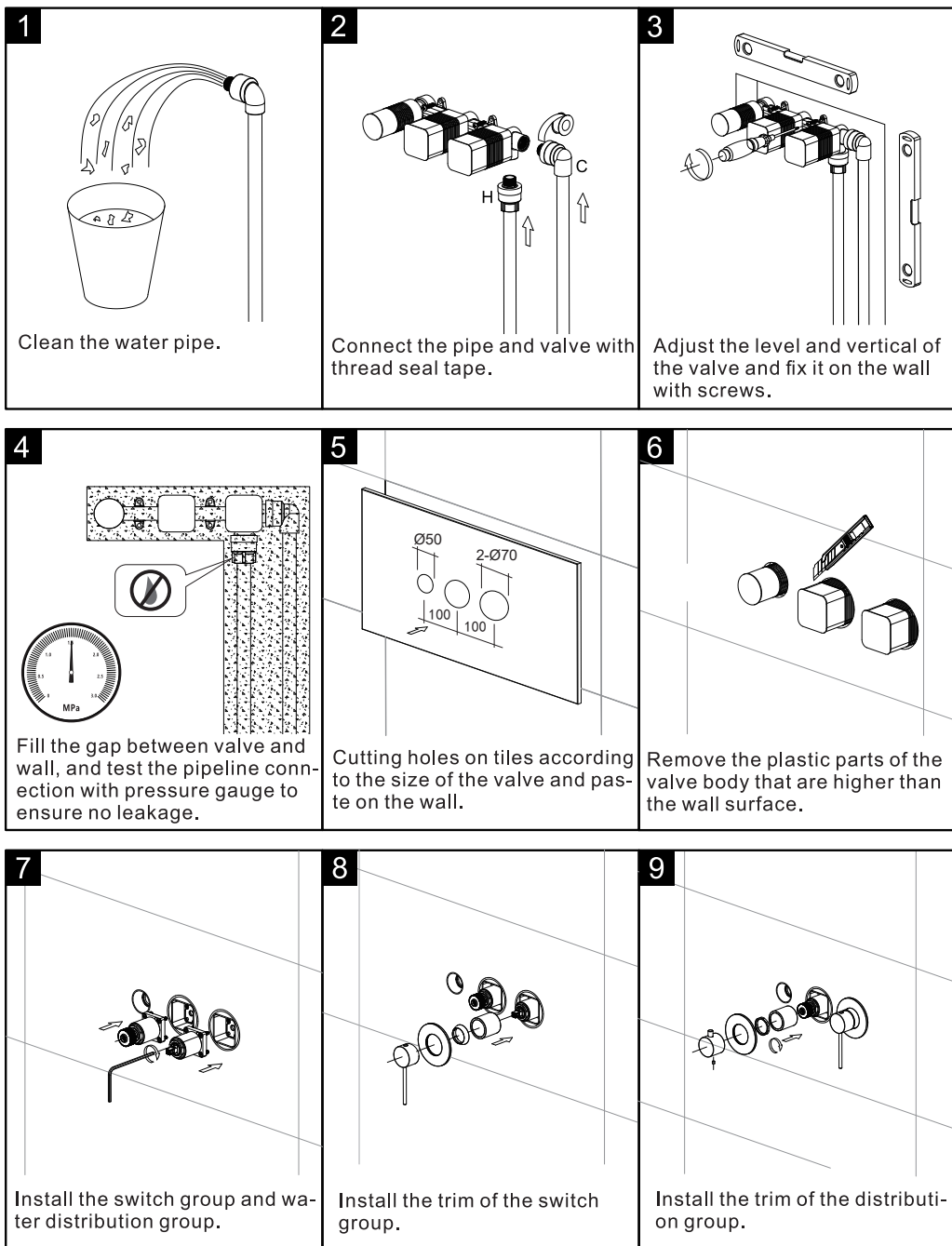
Recommend Tools



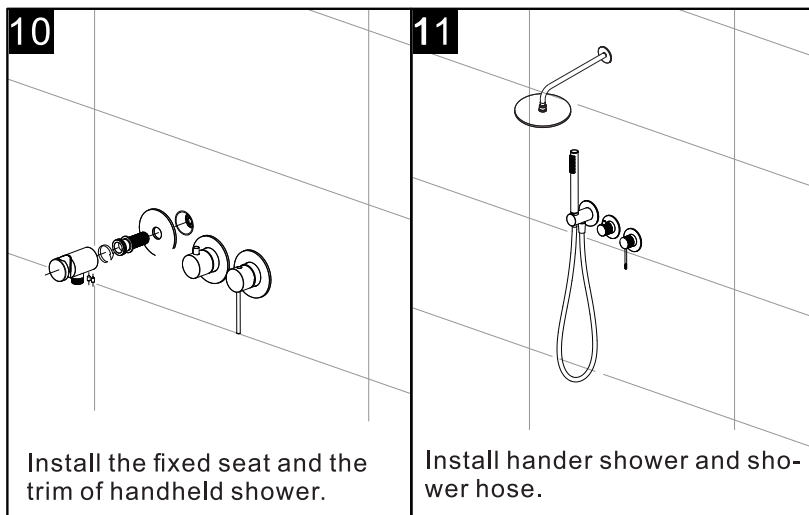
Dimensions

Unit:mm





Installation



Before Use

In order to ensure the shower functional stability and long-lasting appearance, please follow the following precautions:

The main body of the shower is made of high-quality brass. Brass is soft, so do not hit it with hard objects;

Each component of this product has been professionally assembled and tested before leaving the factory. Non-professionals should not disassemble it to avoid affecting the product warranty;

Do not use this product at overpressure or temperature to avoid excessive harm to your body and irreversible damage to the product;

In order to maintain a better appearance, rinse the surface stains with clean water after each use;

Do not use metal or other hard cleaning tools to clean the product surface to avoid scratching the product;

Do not use acidic or other highly corrosive cleaners to clean the product surface to avoid damaging the product surface coating;

When a product malfunctions, contact the dealer promptly to send a professional to perform maintenance.