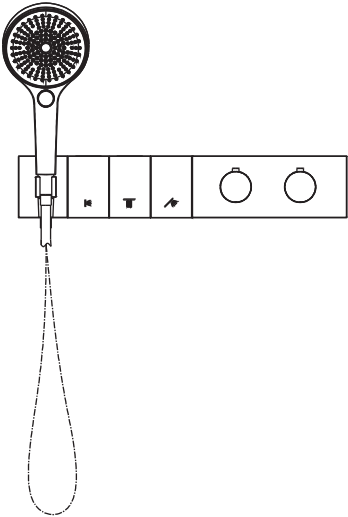
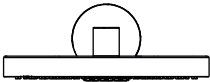


mob

INSTALLATION INSTRUCTIONS

Concealed Bathtub Faucet



Before Installation

Check whether the product in the package is consistent with the installation instructions

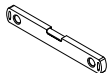
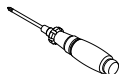
Make sure the product is suitable for the use environment (pressure : 0.03 MPa - 1 MPa, temperature: 5°- 9 0°C)

Check whether the product and spare parts are damaged

Turn off the waterway switch before installation

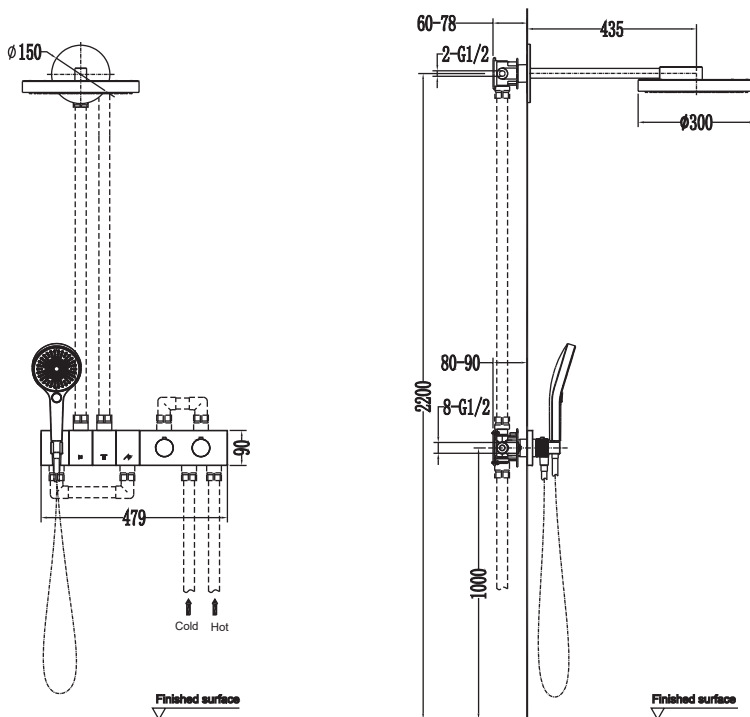
Prepare the tools you may need

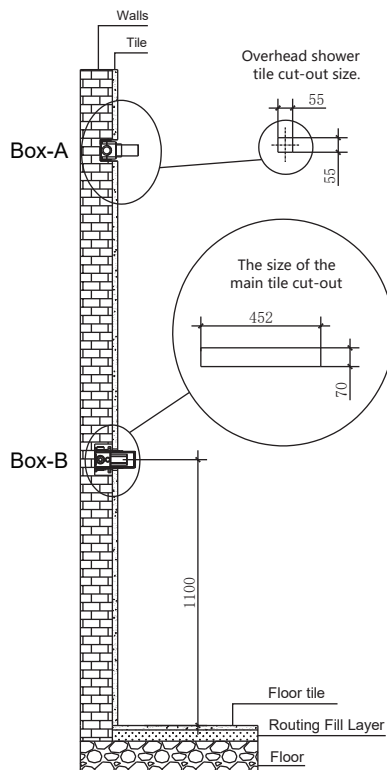
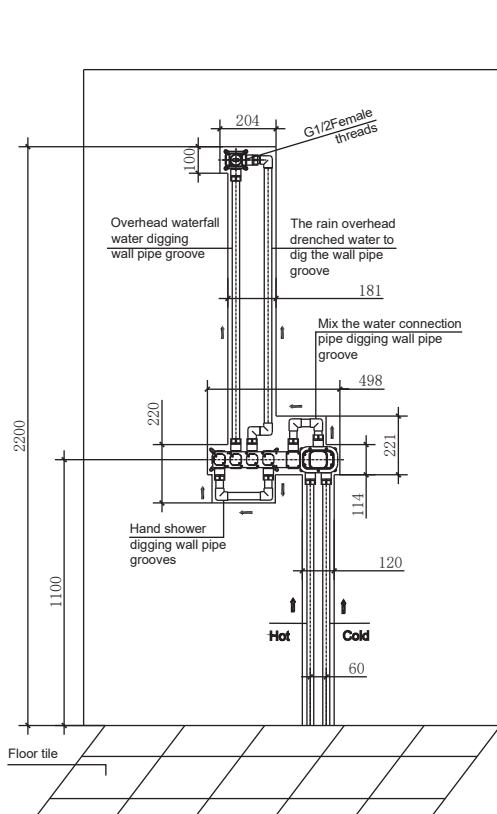
Recommend Tools



Dimensions

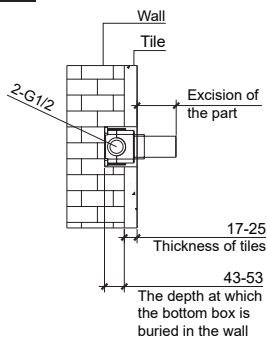
Unit:mm



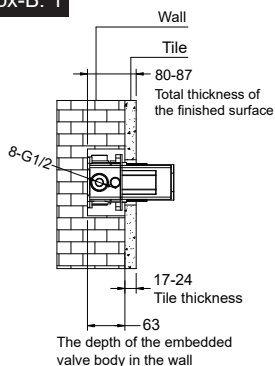


Note: The cold and hot water inlet must be confirmed to be correct before sealing the wall

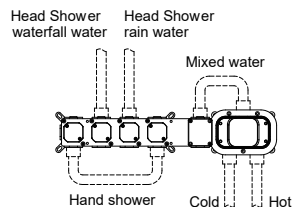
Box-A



Box-B: 1

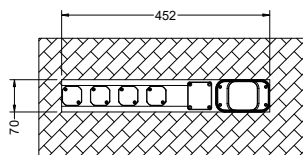


Box-B: 2



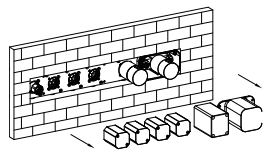
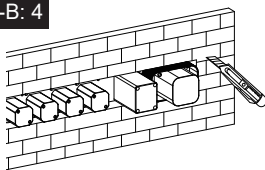
Installation

Box-B: 3

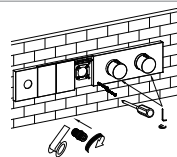
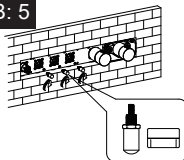


Tile hole size for valve body

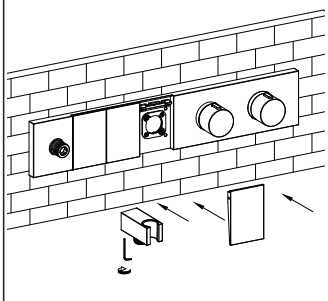
Box-B: 4



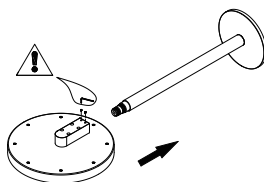
Box-B: 5



Box-B: 6

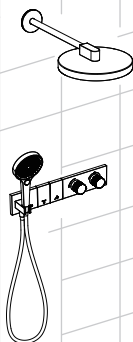


Box-B: 7



Fix the shower head
with a hexagonal key

Box-B: 8



Before Use

In order to ensure the shower functional stability and long-lasting appearance, please follow the following precautions:

The main body of the shower is made of high-quality brass. Brass is soft, so do not hit it with hard objects;

Each component of this product has been professionally assembled and tested before leaving the factory. Non-professionals should not disassemble it to avoid affecting the product warranty;

Do not use this product at overpressure or temperature to avoid excessive harm to your body and irreversible damage to the product;

In order to maintain a better appearance, rinse the surface stains with clean water after each use;

Do not use metal or other hard cleaning tools to clean the product surface to avoid scratching the product;

Do not use acidic or other highly corrosive cleaners to clean the product surface to avoid damaging the product surface coating;

When a product malfunctions, contact the dealer promptly to send a professional to perform maintenance.